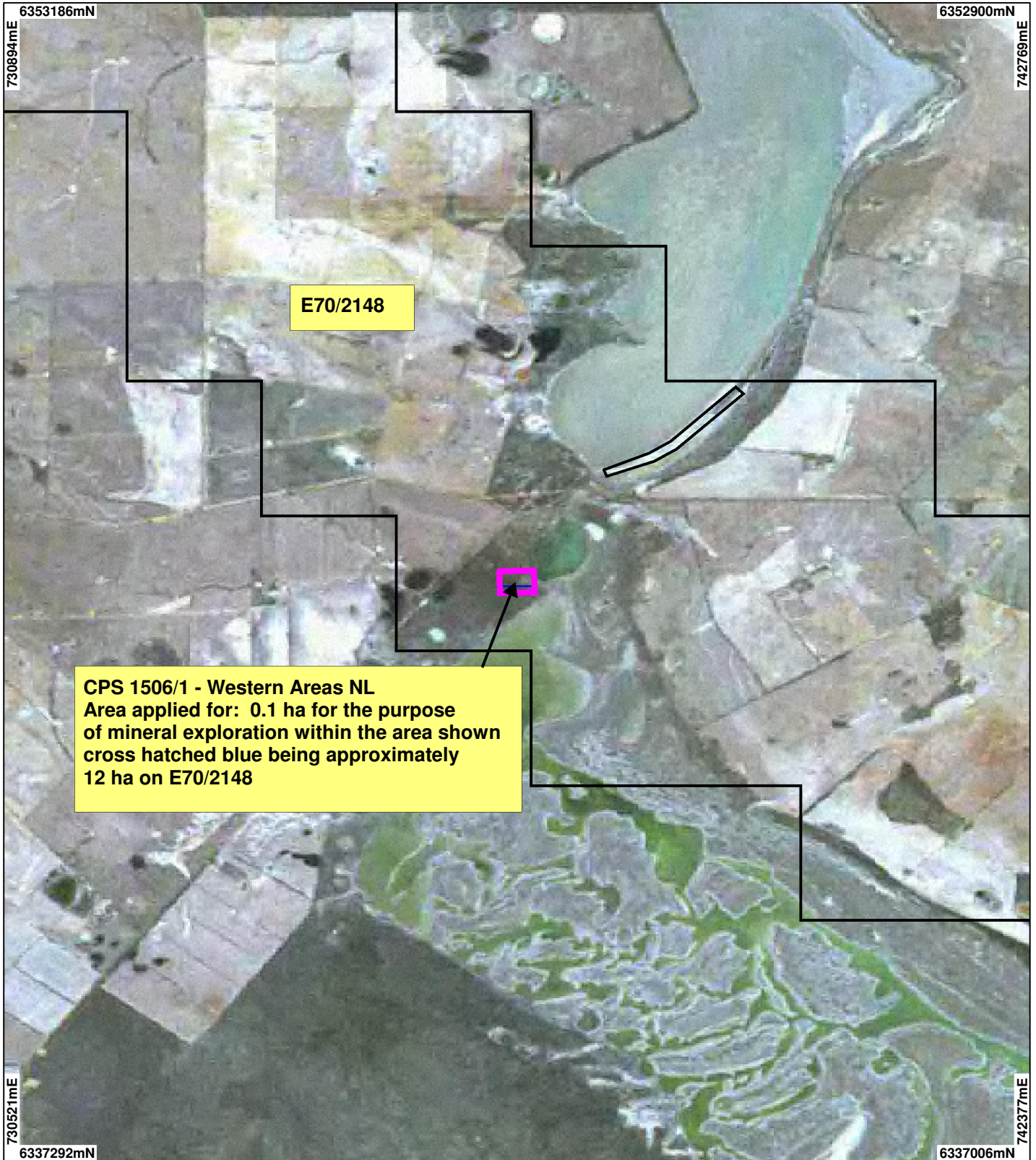


CPS 1506/1 - Western Areas NL



CPS 1506/1 - Western Areas NL
 Area applied for: 0.1 ha for the purpose
 of mineral exploration within the area shown
 cross hatched blue being approximately
 12 ha on E70/2148

LEGEND

- Clearing instruments
- Areas Applied to Clear
 - Areas Subject to Conditions
 - Areas Approved to Clear
 - Mining Tenements - DOIR_1
- Western Australia ETM 25m
 321 - GA 99



Scale 1:70000
 (Approximate when reproduced at A4)

Geocentric Datum Australia 1994

Note: the data in this map have not been projected. This may result in geometric distortion or measurement inaccuracies.

..... Date

Officer with delegated authority under Section 20 of
 the Environmental Protection Act 1986

Information derived from this map should be
 confirmed with the data custodian acknowledged
 by the agency acronym in the legend.



WA Crown Copyright 2002

* Project Data. This data has not been quality assured. Please contact map author for details.